

Mobility Snapshots Guidance Template

Counting road users

Instruction page

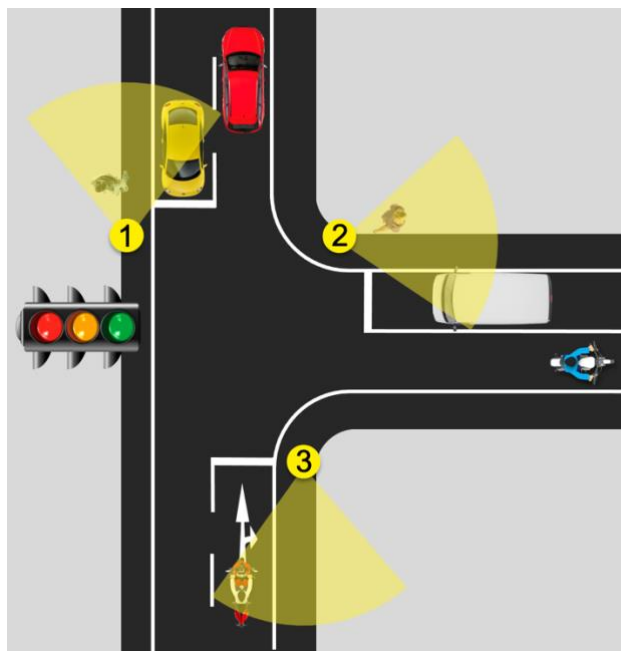
This template is provided to help with counting road users entering the intersection along the main road and from the side road/s. Using this template is optional.

We recommend the count be done for 15 to 30 minutes during peak time (the busiest time of the day).

The longer the count is, the more accurate it will be. Counts should not be done for less than 15 minutes. However, they may last up to one hour.

The count should categorise road users into:

- Pedestrians (those walking or using mobility aids, such as wheelchairs), who cross the road and do not cross the road (noted separately on the count sheet)
- Cyclists (including pedal and powered bicycles, tricycles, scooters and other micro mobility with speeds of up to 25km/h),
- Motorcyclists (motorised or powered 2 or 3 wheelers with speeds of over 25km/h),
- Cars, vans, small delivery trucks and minibuses, and
- Large buses and trucks.



For busy or multi-lane intersections, we recommend placing one person at the entry to each leg of the intersection to count all road users entering the intersection (this avoids double counting). For example, on a three-leg intersection, there would be three 'counters' as positioned below.

For smaller and less busy intersections, this can be done by one or two people covering two or more intersection entries.

Print and use the *Road User Counting Sheet* attached. Each person should have their own counting sheet for the intersection entry/entries they are responsible for counting. For example, if there are three people counting as shown above, there will be three counting sheets completed for one entry each.

The tallies from each sheet can then be used to fill in the Upload Page.

IMPORTANT

NEVER STAND IN A LOCATION WHICH PUTS YOU AT RISK. Please take care of your safety and wear clothing which can be easily seen.

Road user counting sheet

Intersection description (street names, city, country): _____

Date and time of count: _____

Duration: _____

Road entry name:

<i>Pedestrians</i>		<i>Cyclists</i>	<i>Motorcyclists</i>	<i>Cars, vans etc.</i>	<i>Buses, trucks etc.</i>
<i>Not crossing</i>	<i>Crossing</i>				

Road entry name:

<i>Pedestrians</i>		<i>Cyclists</i>	<i>Motorcyclists</i>	<i>Cars, vans etc.</i>	<i>Buses, trucks etc.</i>
<i>Not crossing</i>	<i>Crossing</i>				

Upload page

Once the counts have been completed, complete this table and upload a copy to the Google Form (Part 8): <https://bit.ly/StarRatingMobilitySnapshot> or email with the completed form to admin@roadsafetynegos.org.

Intersection description (street names, city, country):					
Date and time of count:					
Duration:					
<i>Number of road users</i>	<i>Pedestrians</i>	<i>Cyclists</i>	<i>Motorcyclists</i>	<i>Cars, vans etc.</i>	<i>Buses, trucks etc.</i>
Main road entry 1					
Main road entry 2					
Side road entry 1					
Side road entry 2 (if applicable)					
...					
...					